

Features

Sales Support

SL1000

Release x

Doc. Version 1.00

The SL1000

Smart Communication for Small Businesses



www.nec-unified.com



Agenda

Feature overview

Licensed Features

Embedded VRS \ Answering Machine

Conference features

Security

Inmail

Networking

Ecology



Lean and Green

- Energy efficiency mode, contributing to a healthier environment
- Built-in conferencing for a greener approach to business meetings
- A range of home working options to help lower fuel emissions

SL1000 Benefits for your whole team

The SL1000 is Easy to use

It provides

- Intuitive features, no training required
- Time saving features to speed work flow
- Applications to increase productivity



Feature Overview

- Abbreviated Dialing/Speed Dial
- Account Code Forced/Verified/Unverified
- Account Code Entry
- Alarm
- Alarm Reports
- Alphanumeric Display
- Analog Communications Interface (ACI)
- Ancillary Device Connection (SL1100)
- Answer Hold/Automatic Hold
- Attendant Call Queuing
- Automatic Release
- Automatic Route Selection (ARS/F-Route)
- Background Music
- Barge-In
- Battery Backup - System Memory
- Battery Backup - System Power
- Built-in Auto-Answering
- Call Arrival (CAR) Keys
- Call Duration Timer
- Call Forwarding
- Call Forwarding with Follow Me
- Call Forwarding, Off-Premise
- Call Forwarding/Do Not Disturb Override

- Call Monitoring
- Call Redirect
- Call Waiting/Camp-On
- Callback
- Caller ID Call Return
- Caller ID
- Caller ID - Flexible Ringing

And MUCH more !

All Feature descriptions are in the SL1000
Features and Specifications manual

-
-
-
- Voice Response System (VRS) - Call Forwarding - Park and Page
- Volume Controls
- Warning Tone for Long Conversation

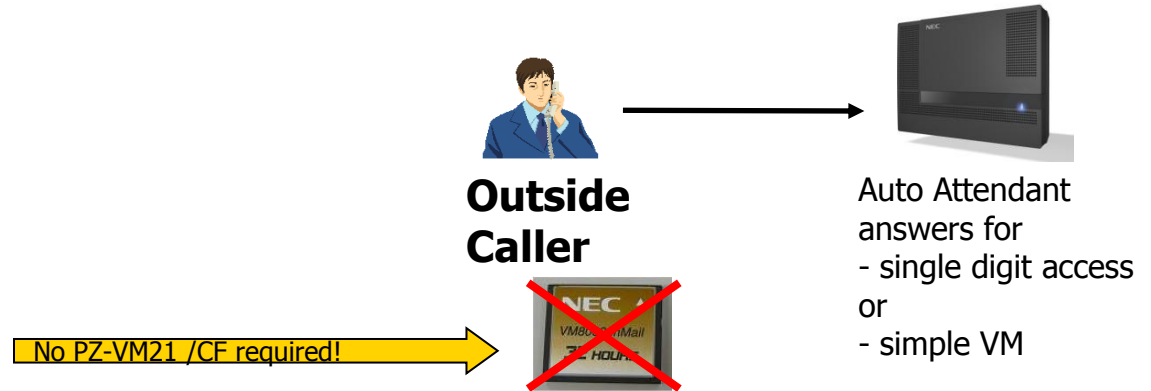
Licensed Features

- Majority (90%) of users will not need to add a license
 - Current License Server has to be used

Feature	Description	Type of License	Activation Method	Bundled License	System Max	Note
VoIP Trunk	SIP Trunk License	Port	Requires from 5 th port	4	16TRK+16EXT	MEMDB and VOIPDB is required
VoIP Extension	Standard SIP Terminal License	Port	Requires from 1 st port	0	6TRK+16EXT	MEMDB and VOIPDB is required
VoIP Encryption	Encryption License for Multi-Line IP Terminal	System	Requires if this feature needs to be activated	None	On	On/Off license
VoIP NAPT	NAPT License for Multi-Line IP Terminal	System	Requires if this feature needs to be activated	None	On	On/Off license
In-Mail	Additional In-Mail Channel License (2ch)	Channel	Requires from 3 rd Channel	2 (15H CF)	16ch	
In-Mail Advance	In-Mail Advanced Features License - <i>E-Mail Notification</i> - <i>Cascading message notification</i> - <i>Find-Me/Follow-Me</i> - <i>Password Option</i> - <i>Hotel/Motel</i>	System	Requires if this feature needs to be activated	None	On	On/Off license MEMDB is required for E-Mail Notification
Mobile Extension	Additional Mobile Extension Port License	Port	Requires from 5 th port	4	32	
Hotel/Motel	Hotel/Motel Feature License	System	Requires if this feature needs to be activated	None	On	On/Off license

Answering Machine \ Embedded VRS

One channel VRS without the need for PZ-VM21 or CF.



4 messages to be used for Auto Attendant only

1 system voice mail box,

- Upto 10 Voice mail messages can be left,
- The total storage time is approx 8 minutes, the max. for any message is 2 minutes
- 1 Language
- MWI is given by display message (no lamp) on Port 1 phone.
- Supports general message (broadcast) functionality.

Conference features

Meet Me Conference:

- CPU provides 32 conference circuits in 2 blocks of 16
- Users can dynamically set up conference with max.16 internal or external parties until all 32 circuits are used
- Each party joins conference by dialing a conference code circuits
- The Split functions allows i.e. a dispatcher to talk temporary, in private, with a conference member and after this join the meeting again.
- Drop all internal conference members
 - When the Conference Originator hangs up with a conference on Hold, or when trying to add another caller, all internal calls are dropped.
- Barge-In on a Conference call (also by DISA and Tie Line users)
- Unsupervised Trunk-to-Trunk Conference
 - A user can set up an Unsupervised Trunk-to-Trunk Conference and then drop out of the call, allowing the remaining parties to continue the conversation.



Room Monitoring from Outside (via DISA)

Access from outside to monitor the room sound from terminal built-in microphone.



Security with 3rd Party Equipment

- Room Monitoring with PIR(*)
- Emergency\Panic Button

Work with 3rd Party PIR / Emergency Button to provide Security feature such as Auto-Emergency Call and Warning Message Sending. (*) PIR : Passive Infrared Sensor



Warning Message

Automatically and periodically send the VRS Message from built-In Speaker on Multi-Line Terminal during night mode.



Remote Inspection

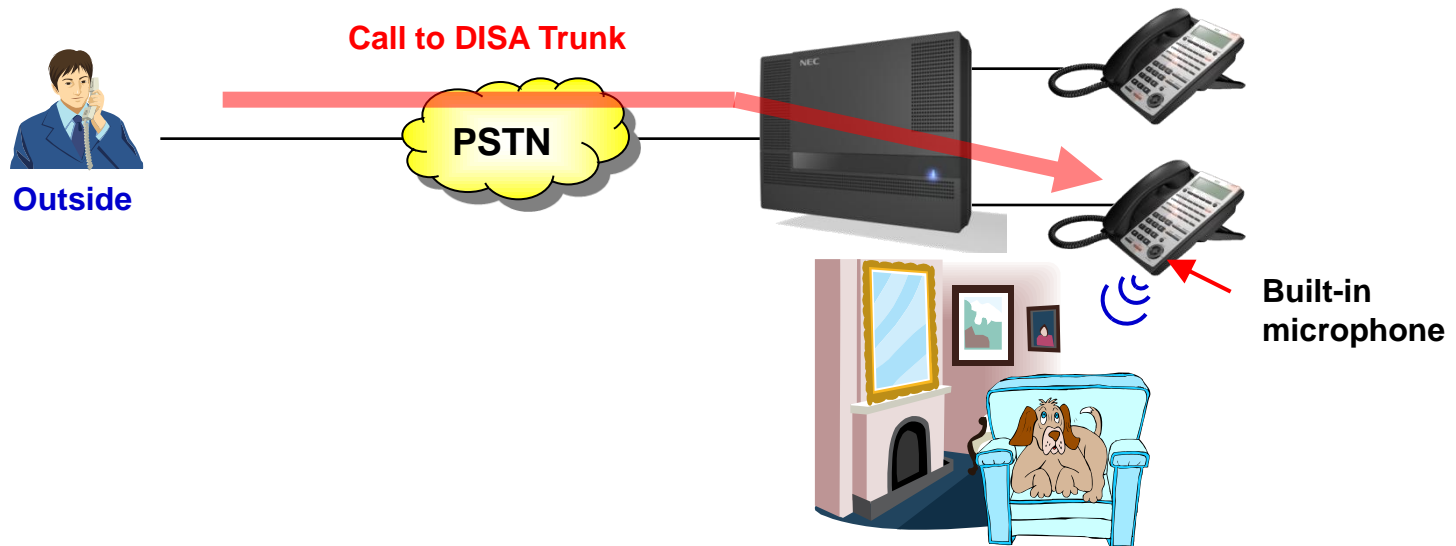
Automatically ring the terminal with pre-programmed schedule in order to check whether users answer or not. Auto-Emergency Call is placed if no answer.



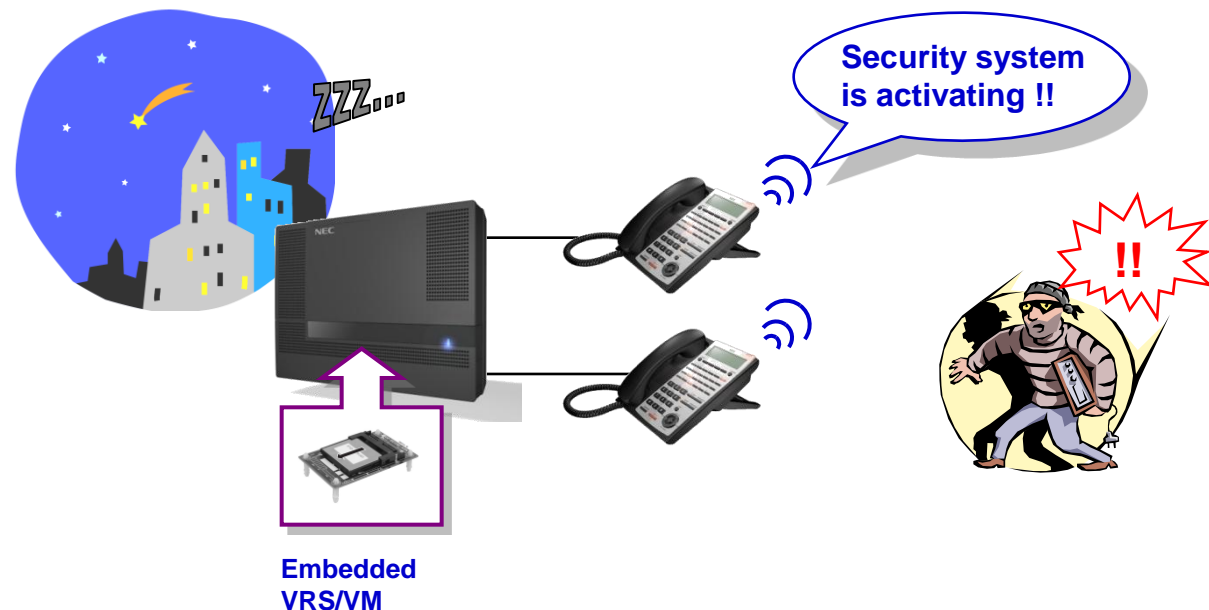
Room Monitoring from Outside

Security

- Enable to monitor the room sound from outside via DISA.
- Activate the built-in microphone of Multi-Line Terminal.
- This feature is under DISA password control for secure operation.



- Enable to send the VRS Message automatically and periodically from built-in Speaker on Multi-Line Terminal as “Warning Message” during Night Mode.
- It is expected to act as a deterrent even if there is no tight security facility.



Up to 8 Security Sensors can be connect to door phone ports

With the help of these contacts security can be implemented

- Scanning this port can done via a pre-defined time schedule
- When system detects a signal from the Security Sensor, following actions can be taken:
 - Give repeated “Warning message” to an internal or external paging group
 - Make an emergency call to a pre-programmed destination, followed by a pre-recorded VRS message (after answering the call).
 - After listening to the VRS message, the person at the receiving destination can monitor the situation and enable a two-way path if desired

Practical ideas\examples are given in next sheets

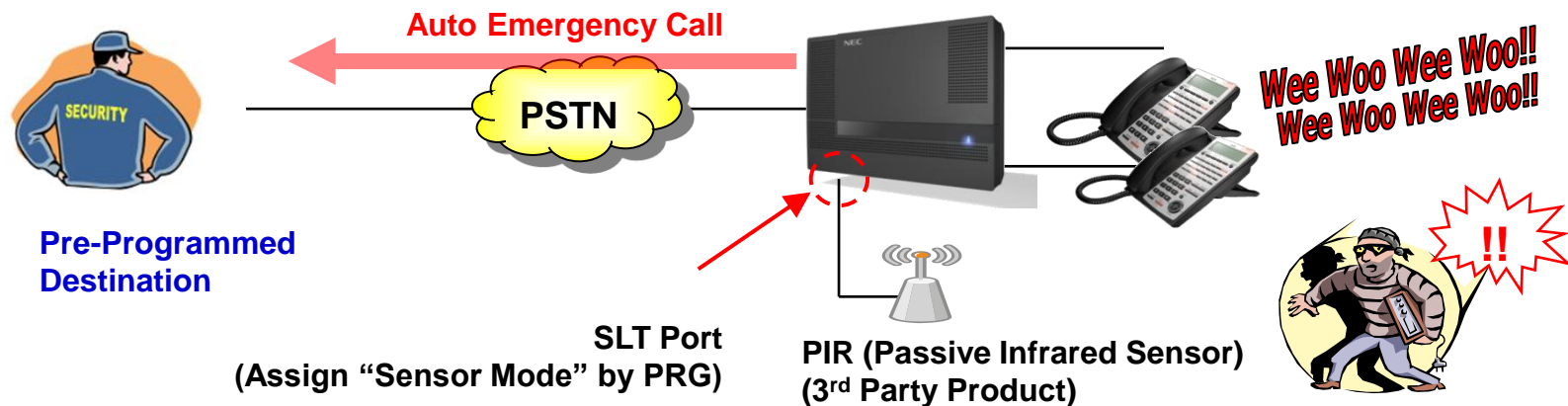
Disclaimer: The configurations that are given in this presentation are not intended to be used as a security system which is relied on solely. They are just given as a suggestion of a supplementary service on other procedures, implemented at customer sites.

Idea 1 : Room Inspection with PIR

Security

When the system detects the signal from connected PIR (3rd Party Product)

- A pre-recorded Warning Message is paged to the built-in speaker on Multi-Line Terminals and/or on Paging Speakers),
- The system can automatically place an outgoing emergency call to a pre-programmed destination.



Relay Contact Rating		
Mode 1	40mA	30Vdc
Mode 2	40mA	10Vdc

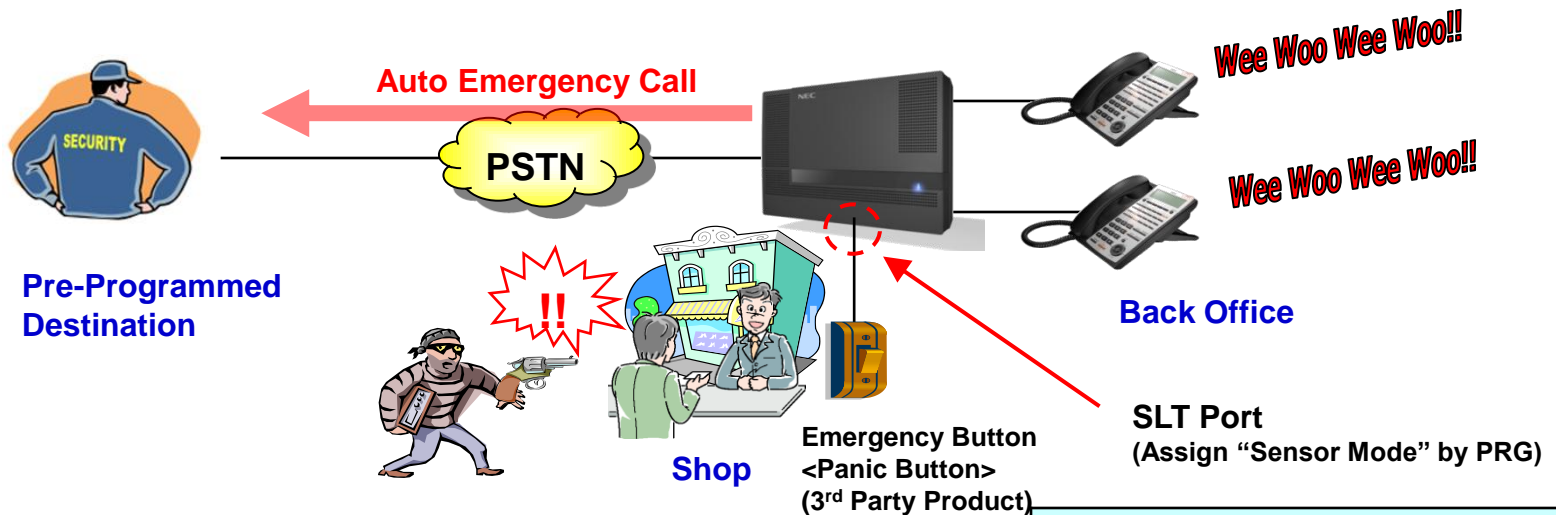
Idea 2 : Emergency Button

Security

In the event of emergency, the user presses an Emergency\Panic Button

When the system detects the signal from this button (3rd Party Product),

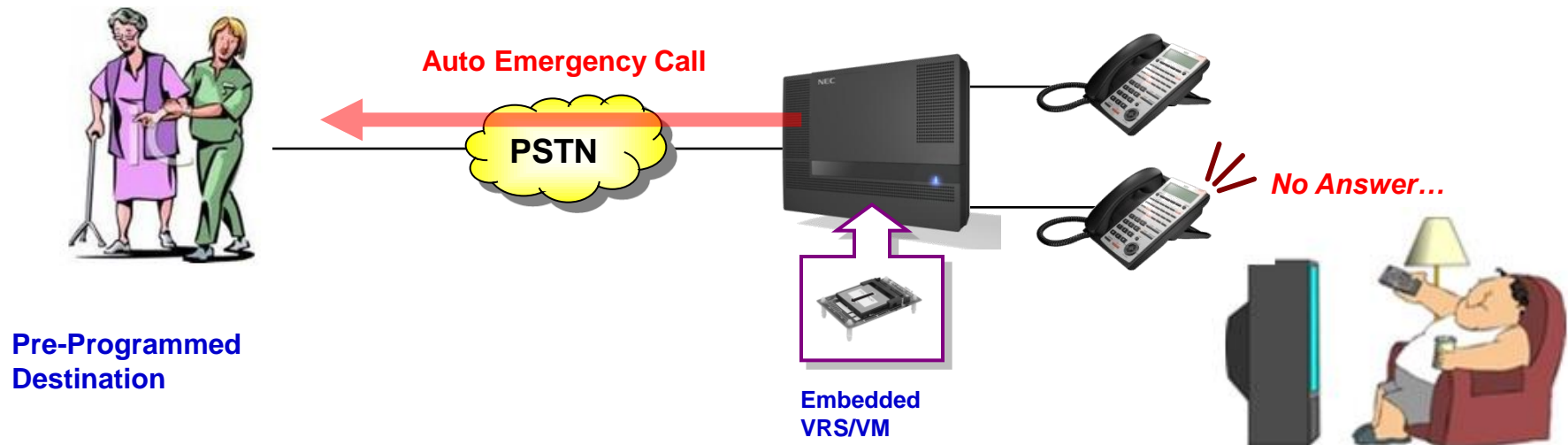
- a pre-recorded Warning Message is paged to the built-in speaker on Multi-Line Terminals and/or on Paging Speakers.
- the system automatically places an outgoing emergency call to a pre-programmed destination. (after answering this call a pre-recorded message can be given)



Relay Contact Rating		
Mode 1	40mA	30Vdc
Mode 2	40mA	10Vdc

For security, or for taking care of elder people living alone you could:

- Automatically ring the terminal on a pre-programmed time schedule in order to check whether users answer or not.
- Place an auto-emergency call with pre-recorded VRS Message to the pre-programmed destination if no answer.



“Voicemails can be accessed from system phones, mobiles and even email inboxes”



InMail

With The PZ-VM21 card and an optional CF card,
a VRS\Voicemail system can be created:

2 types CF cards available providing

- IP4WW-CFVRS-C1:

- VRS only (512 MB)
- 100 messages

- IP4WW-CFVMS-C1:

- VRS and 2-channel In-Mail (512 MB/15 hours)



InMail provides a rich set of voicemail features (over 80 features), for example:

- Call Routing Mailboxes (16) for Auto Attendant working
- Individual User Mailboxes, Group Mailboxes
- Call (Conversation) Recording
- Email integration (Voice Message can be send as wav attachment)
- Directory Dialing (dial the first few letters in the extension user's name to reach this extension)
- Answer Machine Emulation
- Multi-Language prompts, 24 languages
- 'Mailbox Tagging' for DDI calls
- upload of mailbox greetings
- Easy configuration via PCPro
- and many, many more...

Additional Licenses:

■ Extra Channels (BE110755 SL-VM-CHANNEL-2 LIC)

■ InMail Advanced Features (BE110733 SL-VM-ADVANCE LIC)
is required for:

- E-Mail Notification
- Cascading message notification
- Find-Me/Follow-Me
- Password Option
- Hotel\Motel

■ The MEMDB card is required if:

- E-Mail Notification is required (InMail)
- VRS Channels greater than 4 are required
- InMail Channels greater than 8 are required

Networking

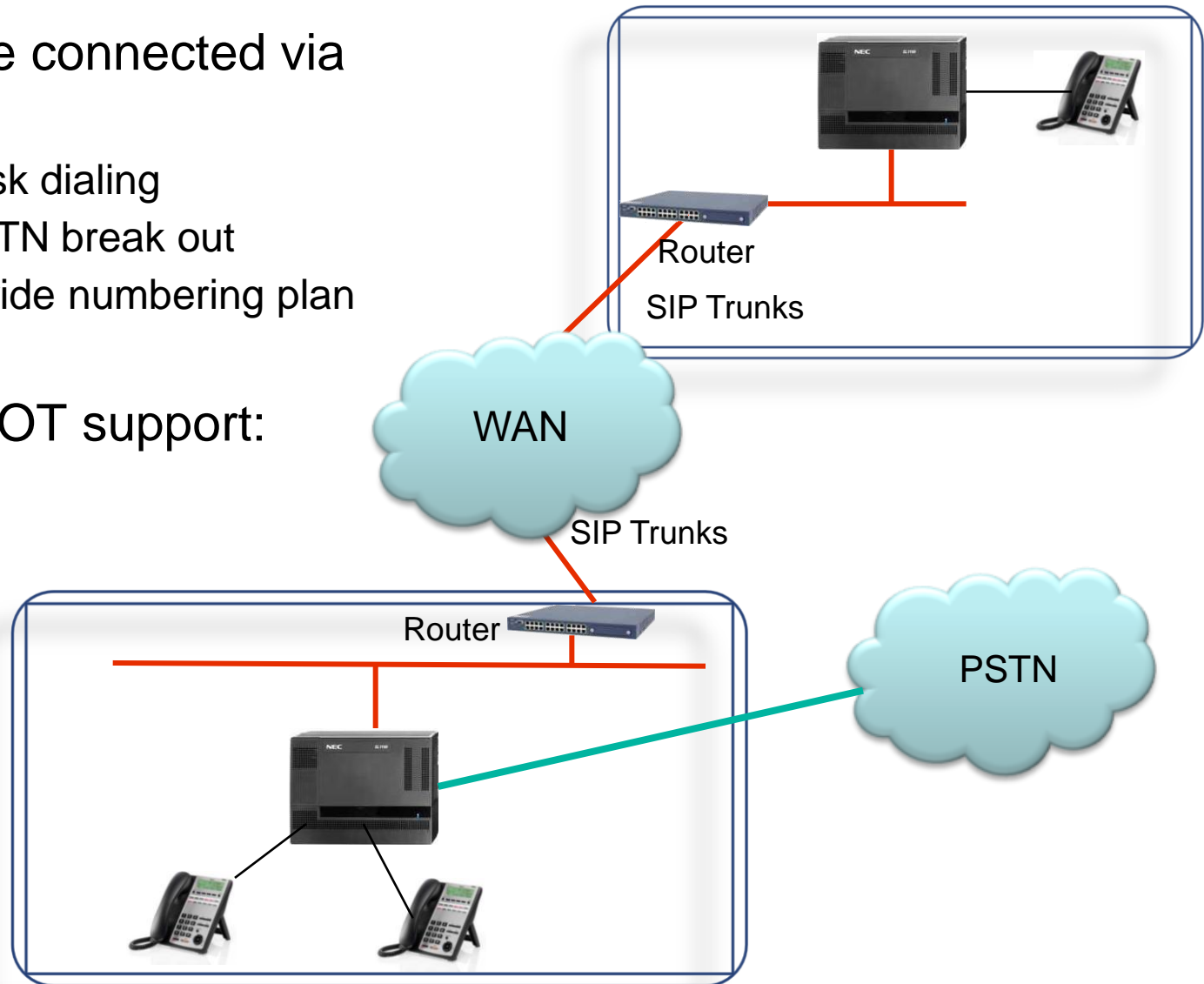
SL1100 can be connected via

- SIP trunks

- Desk to Desk dialing
- Remote PSTN break out
- Company wide numbering plan

SL1100 does NOT support:

- KCCIS,
- NetLink
- or AspireNet



Ecology

Environmental issues, such as global warming or ecology are one of the most important themes in today's world.

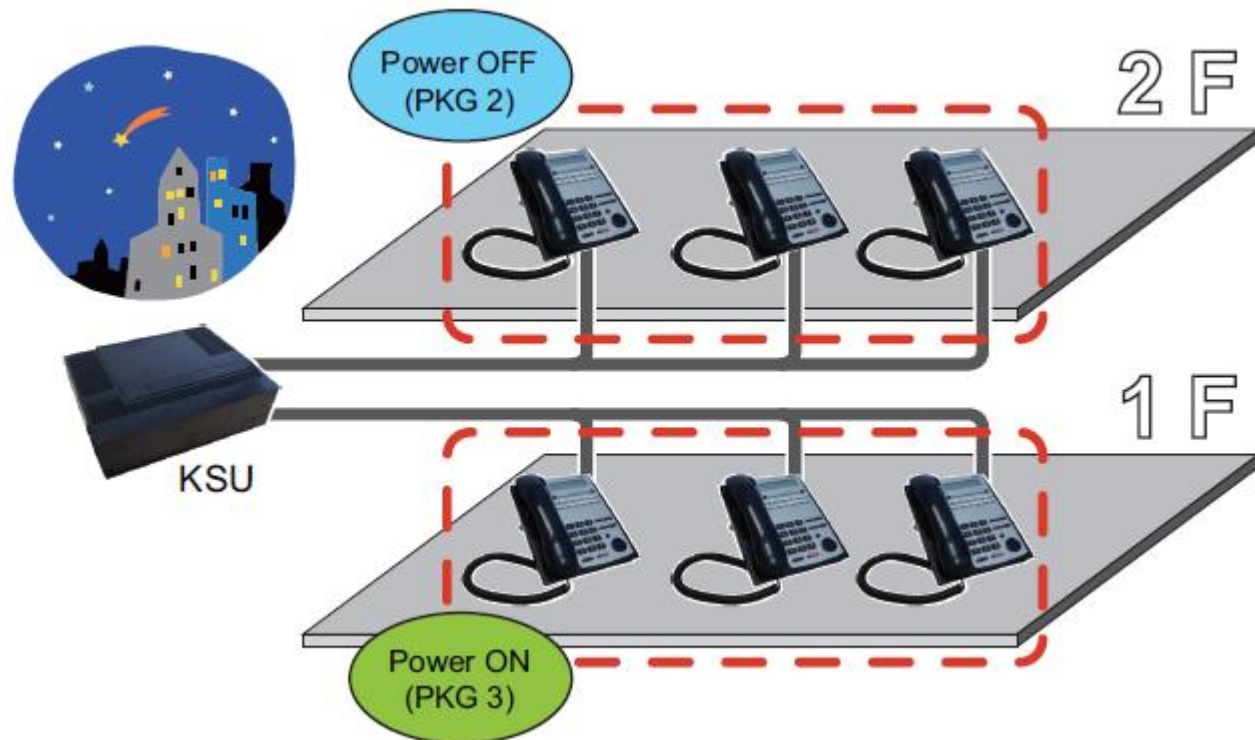
The following energy saving features are implemented in this system:

Ecology mode

- System can cut the power for Multiline Terminals
 - Power cutting feature can be by
 - Night mode time schedule
 - Service Code or Function key

- During power cutting “off” state,
 - Outgoing calls can not be made.
 - Incoming calls receive a busy tone.
 - Call forward features work at the forward set terminal.
 - Disables Both Ring CFW/Follow Me

Groups can be defined to Power off the Terminals
eg per department or per day\night shift



Power Saving Mode

- Non operation of the Multiline Terminal
or
- No incoming calls for the programmed period,
causes the system to activate the power saving mode.
 - This darkens the brightness of all Line Key and feature key LED's on the Multiline Terminal.
 - The display of the terminal is not affected
 - Power saving mode can be set for each terminal individually.
 - Any key operation or incoming call at the terminal ends the power saving mode and all LEDs return to normal brightness.

Packaging

- Eco friendly materials

Empowered by Innovation

NEC