

# **SV8100 – Management**

**Pre-Sales Support**  
**UNIVERGE SV8100**  
**Release 4**

**Doc. Version 4.00**

# Agenda

---

- Management Overview
- PCPro
- WebPro (UserPro)
- Phone Programming
- IP Phone manager

# Overview

## PCPRO

- Offline Programming with PC application
- Graphical User Interface
- Offline

## WebPro

- Programming via Web interface
- Graphical User Interface
- Changes are immediately effective

## Phone Programming

- Programming via System Phone
- Coded commands
- Changes are immediately effective

## Offline Programming with PC application

### ■ Graphical Interface

- Data can offline be prepared and Uploaded later to the SV8100
- Data can be downloads
- Easy to make Backup

### ■ Programming

- Wizzard at 3 levels
  - Mandatory
  - Optional
  - Advanced
- System data Programming
  - Only to be used by experienced engineers

### ■ Help Information

- Contains features and Specification Manual

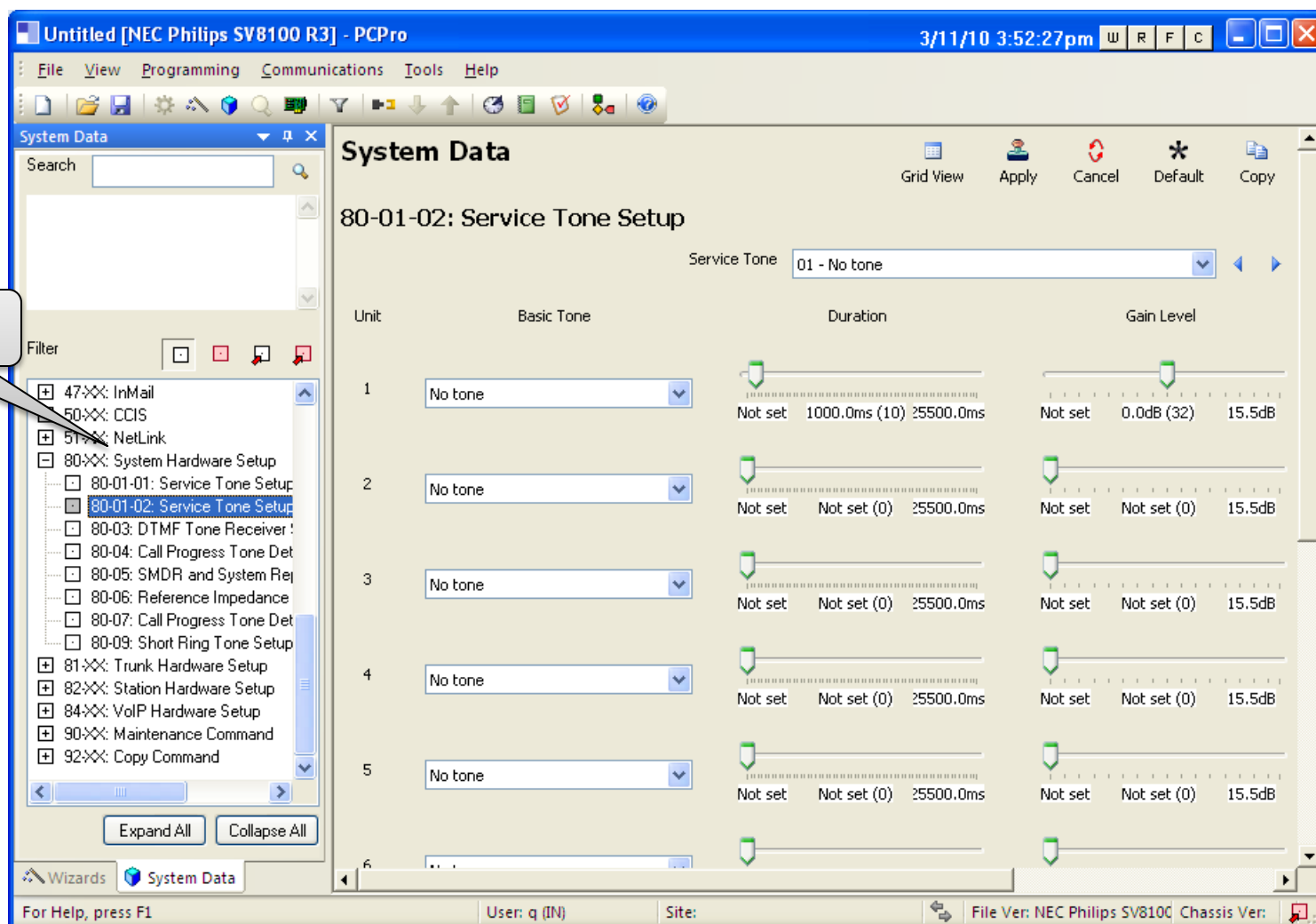
# Graphical Interface

PCPro

The screenshot displays the PCPro software interface for the NEC Philips SV8100 R3. The interface is divided into several key areas:

- Main menu Toolbar:** Located at the top, it includes standard menu items (File, View, Programming, Communications, Tools, Help) and a series of icons for various functions.
- Wizards:** A panel on the left side containing a search bar and a list of configuration wizards. A callout labeled "Wizzards" points to this panel.
- Submenu:** A list of configuration options within the Wizards panel, such as Blades, Quick Install, Blade Configuration, System Numbering Plan, Speed Dial, Extensions, Department Groups, COS, Toll Restriction, Timers, Timer Class of Service, Operators, Trunks, IRIG, DIL, DDI, Flexible Ringing by Caller ID, Auto Attendant, Queue Messages, Voicemail, Night Service, LCR, F-Route, Additional Devices, Advanced Items, Applications, and Version. A callout labeled "Submenu" points to this list.
- Blade Configuration:** The central workspace showing a hierarchical view of the system's components. It includes sections for "Chassis 1", "Chassis 3", and "Chassis 2", each with a list of slots and their configurations. A callout labeled "Work space" points to this area.
- Status bar:** Located at the bottom, it displays system information such as "CPU MAC: N/A", "Version Information", "Trunks", "File Ver", "User: q (M)", "Site:", and "File Ver: NEC Philips SV8100 - Chassis Ver:". A callout labeled "Status bar" points to this area.

A context menu is also visible, showing options like Telephone, Trunk, Trunk (ISDN), Combo, Other, Configure Blade, and Delete Blade.



## Connections

- LAN  
For security reasons the local CPU-IP port can be used i.s.o. the VoIP port
- Remote ISDN-BRI  
connect to a build-in ISDN Modem (DDI to 308)

## Password protected User Accounts

- 4 User levels
  - Tech Installer Mode (IN)
  - System Administrator Mode 1 (SA)
  - System Administrator Mode 2 (SB)
  - User Administrator (UA)
- 1 session active at a time

Each User Accounts can define a range of Connection accounts

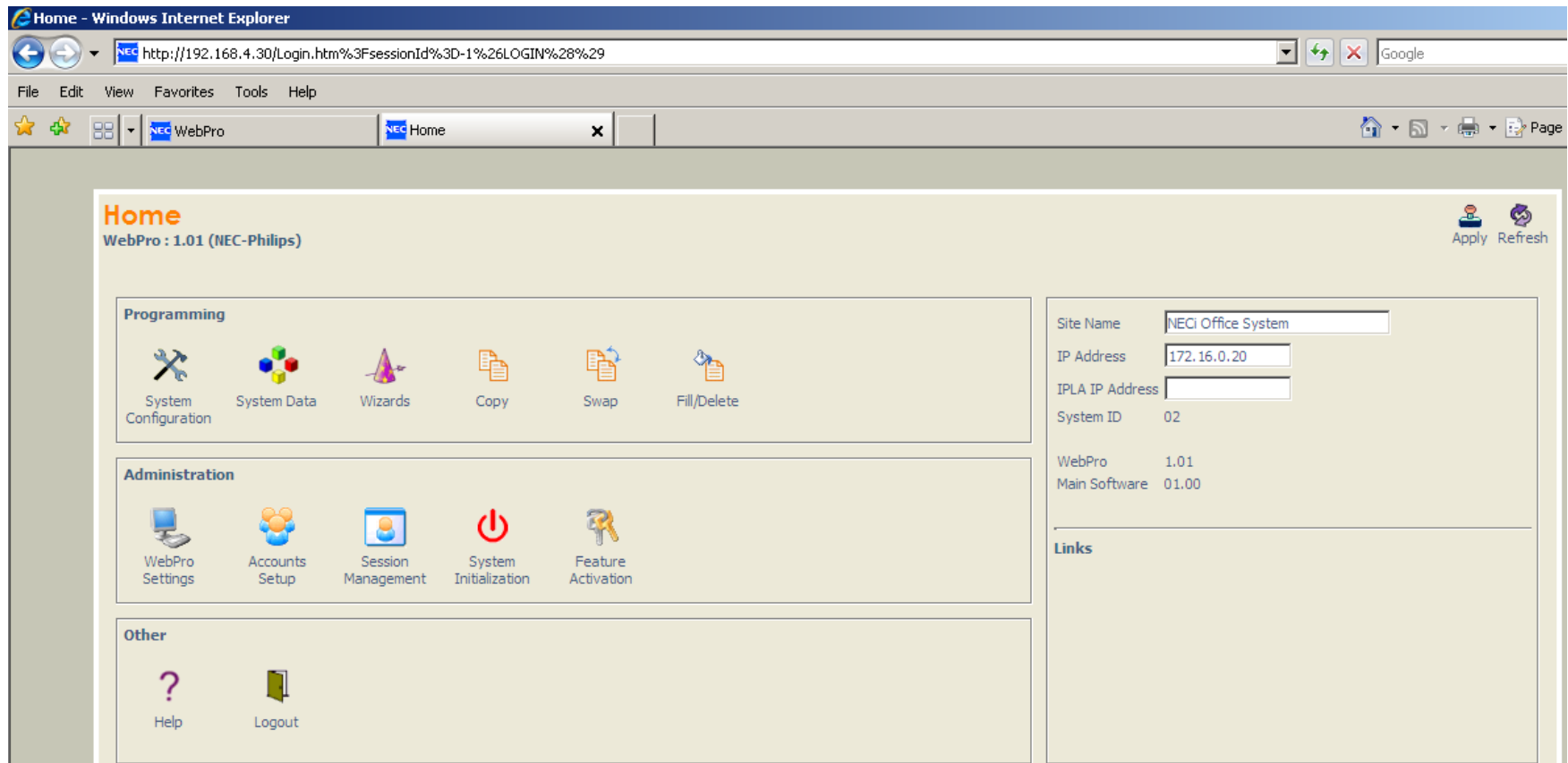
## WebPro

- Connect via Web browser tot the SV8100  
(Maintenance interface integrated in the SV8100)
- Changes are Immediately effective

## Connecion

- LAN  
For security reasons the local CPU-IP port can be used iso the VoIP port
- Remote ISDN-BRI  
connect to a build-in ISDN Modem (DDI to 308)
- Password protected  
2 access levels
  - System Administrator (UA Level)
    - System wide changes
  - User (UB Level) (UserPro)
    - Only allowed to make changes for that extension that that logs in  
(Ext. nr. is login name)
- 4 sessions active at a time





# Phone programming

## Program the SV8100 via a system Phone

- Use codes as used in PCPro System data programming eg 15-22-01 (Mobile extension setup)

## Enter Command Mode by prseeing SPK ##\* "Password" Transfer

## Use Keys to navigate through programming

- Transfer = Store/Next
- Hold = Clear
- Answer = Back
- MIC = Scroll
- SPK = Exit
- Navigation button
  - Up = Next port
  - Down = Previous port
  - Left/Right = Name edit



- Confirm IP Address of system
  - 10-12-01 Ethernet connection
  - 10-12-09 IPLA Connection

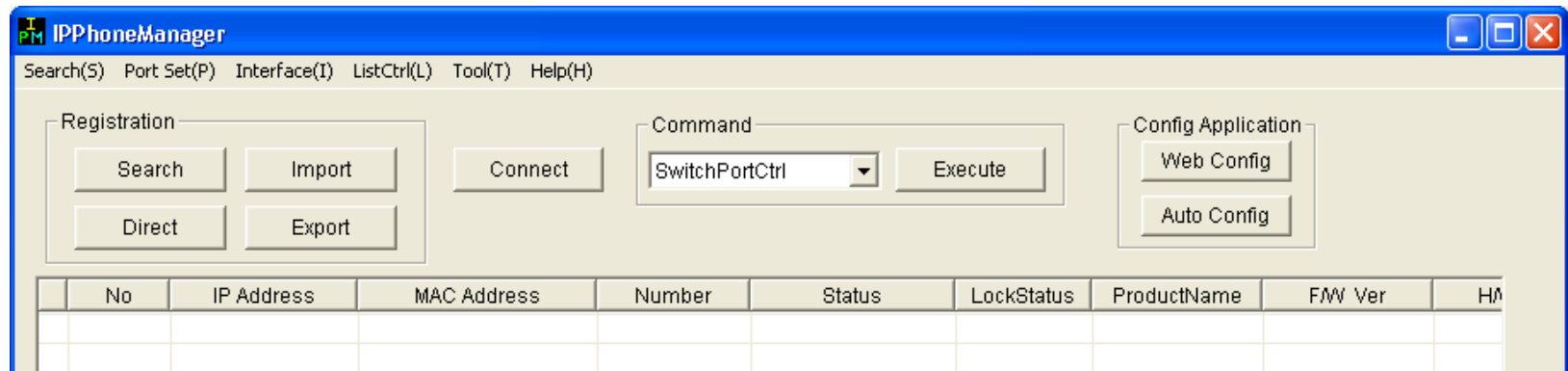
# IP Phone Manager

## Way of working:

- Specify subnet
- Search IP phones which comply with the search algorithm
- Upgrade firmware to these phones

## Telephone management:

- IPPhone Manager – upgrade DT700 phones with new firmware
- PCPro – change settings (e.g. button progr.) on individual phones



Empowered by Innovation

**NEC**